

OCTOBER 2025



LAITY ENLIGHTENMENT

We live in a world of constant coming and going. People leave for moments and forever, and for time periods of every length in between. Children go away to college. Spouses go away on business. Families go away on vacation. Soldiers go off to war. Couples go away on their honeymoon. People who are sick go to treatment centers or the hospital. Politicians go to other countries to influence their leaders. Students go away to other countries to learn from their cultures. And missionaries go to far away places to serve the Lord and others. The list goes on and on for a lifetime, for each of us. In the end, we all go away from loved ones when our life on this earth is over. And for everyone who goes away, they expect to arrive someplace else.

The Chinese philosophy of “yin and yang” describes a kind of natural balance made up of opposing forces that must occur in life. Hot and cold, wet and dry, fire and water, light and dark, life and death are all thought to be physical manifestations of these natural dualities. Newton’s Third Law of Physics suggests that for every action, there is an equal and opposite reaction. So, in keeping with these concepts, it stands to reason that for every choice we make in life, there is an outcome or consequence that will happen as a result of that choice. It may very well be the outcome we expect and want. But it could be something we never imagined; something completely unexpected. A child goes off to college, not with the expectation of failing, but the desire to succeed. A person with a serious illness goes to a treatment center, not with the expectation of getting worse but with the hope of recovering. The soldier goes off to war, not with the expectation of dying, but with the honor of fighting for their country and the hope of returning home safely. Unfortunately, failure, disappointment and death are sometimes the outcomes we are faced with. It can happen that the least expected and worst possibility becomes a reality. In times like these we may ask ourselves, what happened to the balance of life? How did things get so bad? And where is God in all this?

I learned in Sunday school as a small child that God is Love and that He is always with us. I accepted this almost as if I had an imaginary friend alongside me as I went through my day. But it was easy along the way to forget that He was there. As I got older, I found that some of the important decisions in my life often didn’t include my friend, Jesus. Many of the choices I’d made seemed to produce unexpected and disappointing outcomes I would never fully understand. But somehow I always felt God was there when I needed Him most. I believe that God is closer to us in times of trouble than we are willing or able to believe. In the midst of turmoil, it is hard to focus on what is most important. As humans, we tend to react out of fear and the need to do something to fix things. It seems that many times I turned to God only when everything I tried myself, failed dismally. The fact that God was right there with me while I struggled never occurred to me until I had reached that point where I recognized my own failure or desperation. As I think back on my many shortcomings, I have to thank God for bringing me safe thus far. I feel I have been blessed with more good times than bad times. But don’t you have to experience the “bad” before you really appreciate how “good” it can be?

Christ came to us in the form of the baby Jesus. Born in a manger to humble parents. Jesus walked among us and taught us how to live. Christ left us after suffering and dying on a cross for our sins. Jesus came and went in the blink of an eye. Many years and generations have passed since He walked on this earth. And what have we learned

The purpose of Richardson Park United Methodist Church is to help people experience the amazing love of God and develop a vital relationship with Jesus Christ.

so far? Our journey in this life may not be easy. Do we appreciate the good times and give thanks to God? Our Faith in God will be tested at times. Do we pray to God for strength and keep Him close? Our belief that God is with us and that He wants the best for us will sustain us through the tough times. Do we pray for God's help to understand life's challenges and for guidance to keep us on the right path? We should live in the Hope that God will take care of us. But at the same time, we must work to serve Him, follow His laws and love and care for one another. We are human but God has given us a great capacity for wisdom and compassion. Do we use what God has given us for the good?

With all our comings and goings, we must not forget that God sent his Son to save us. And when we accept Him into our hearts, He travels along with us wherever we may go, forever. Thanks be to God!

Your Lay Leader,
Kathy Rogers



**BISHOP LATRELLE EASTERLING'S
DAY ON THE DELAWARE DISTRICT
TUESDAY, OCTOBER 21, 2025
6:00PM**

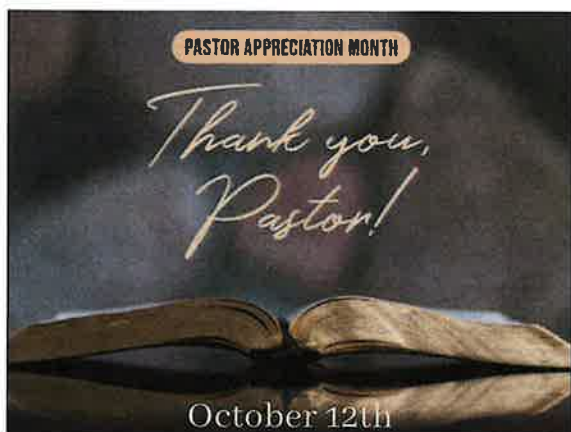
WYOMING UNITED METHODIST CHURCH
216 WYOMING MILL RD., DOVER, DE 19904

You're invited to an evening of sharing with Bishop LaTrelle Easterling.

We welcome you to join us for a meaningful afternoon of sharing, listening, and connection with Bishop Easterling as she visits our District. As we embark on a new appointment year and begin forming new relationships, this gathering offers a vital opportunity to come together in unity and purpose.

This meeting is mandatory for all appointed clergy. All laity of the District are encouraged to attend and take part in this time of fellowship and sharing. Any appointed clergy wanting to request an excusal, please send a written request to Rev. Tom Pasmore in the District Office at DelawareDistrictUMC@gmail.com.

If you need an ALS interpreter, please contact Rev. Jackie Ford at jford@pen-del.org.





United
Women
in Faith

UNITED WOMEN IN FAITH

BY MARLENE JOHNSON

October - yes, I double checked the calendar. God provides such wonderful colors in the autumn. Hopefully you observe the changes and enjoy!

September 14 our "United Women in Faith" resumed meeting. We met in the extension after the worship service. What a wonderful group of like-minded women. Yes, I was so pleased to see each and every one, plus many new faces. Things were discussed- including Laity Sunday on October 19. We will meet on October 12 after worship to discuss what we will do to celebrate that special day. One time was agreed by all- but I will not divulge it- it's not flower pins to designate each of our dedicated women. You must attend on October 19 to discover!

Now, United Women in Faith your assignment:

1. Attend our meeting on October 12
2. Decide what you would like to do on Laity Sunday
3. Read 1 Thessalonians 5:11

Prayer for you:

May I be a good friend-like the precious good friends
You have sent to me.

Blessings, Marlene



THE CHILDREN'S CORNER

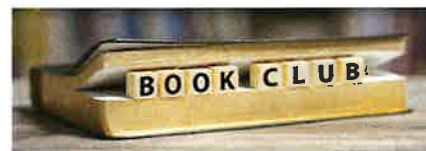
BY MARLENE JOHNSON

Children's Church resumed after the summer break. It was great to see 4 girls ready to begin a study of God. Class started with lighting the candles, attendance and the discovery center. We found things God has given us at the center: flowers, animals and more. You must come to discover things for yourself.

A review of God's creation was enforced throughout the class time with Bible reading in the book of Genesis. Playdoh was given to make the children's favorite animal and a take home paper that reinforced creation.

What is planned for October? Come to discover yourself. We meet in the back of the sanctuary by 10:30 a.m. As a group we venture up to our classroom. Come and join the adventure!

Blessings from Ms. Marlene



BOOK CLUB

BY PAUL WEAVER

Our September meeting was held on Friday, September 19th at 2pm at the church. We discussed "The Housemaid's Secret" by Freida McFadden and had a very interesting discussion.

Our October meeting will be on Friday, October 10th at 2pm at the church. We will discuss "The Wedding Planner" by Danielle Steel.

Our November meeting will be on Friday, November 14th at 2pm at the church. We will discuss "The Woman in Cabin 10" by Ruth Wave.

Coming attractions include "The Queens of Crime" by Marie Benedict, "Before Dorothy" by Hazel Gaynor and several books by Ariel Lawhon ("The Frozen River" and "Flight of Dreams").

FREE LUNCH MINISTRY

BY JOE TUCKER

Free Lunch program is continuing every Thursday 11:30 am to 12:30 pm with a grab-n-go lunch. We deliver a hot lunch in a take-out container from Fellowship Hall. Each person also receives a bag of crackers, power bars, a bottle of water, cup of pudding, etc. Our group of dedicated volunteers work Wednesday morning preparing food and 'bags of blessings' to hand out on Thursday morning. We are averaging about 130 meals a week. Contributions of items are always accepted. Currently, Free Lunch is in need of **plastic grocery shopping bags** at this time.

Some church members pick up meals and deliver them to family and elderly neighbors. Thank you to all volunteers who help on Wednesday and Thursday to prepare and serve free lunch!! Thank you. Blessings, Joe





TECHNOLOGY TIPS

BY JIM CHILCUTT

Set Up a PIN on Windows 10 or 11

Setting up a PIN for login is a quick and secure way to access your device--especially on Windows. Here's how to do it step by step:

Set Up a PIN on Windows 10 or 11

1. Open Settings

- Press Windows + I to open the Settings app.

2. Go to Account Settings

- Navigate to **Accounts ? Sign-in options.**

3. Choose PIN (Windows Hello)

- Under **Manage how you sign in**, find **PIN (Windows Hello).**
- Click **Set up** or **Add.**

4. Verify Your Identity

- Enter your current account password to confirm it's you.

5. Create Your PIN

- Choose a PIN that's easy for you to remember but hard to guess.
- You can include **letters and symbols** by checking the box for "Include letters and symbols".

6. Click OK

- Your PIN is now set up and ready to use for login.

If there is a special topic you want to see just send a note to rpumc@rpumchurch.org.



MEMORIAL TREE

BY GLENDA DONNELLY

Thanks to the great work of the Trustees and the BMG, we have a beautiful Memorial Tree to recognize all our loved families and friends who have passed.

Take a moment and stop by the Extension and see the Memorial Tree. If you are interested in adding a loved one's name to the Memorial Tree, there are forms located on the table near the Tree. Any questions, please contact Glenda Donnelly at (302) 998-5047 or call the Church Office.

Thank you. Glenda

FLOWER CONTAINERS NEEDED

We love delivering altar flowers to shut-ins and they love the visit **BUT** we are in need of containers. I have found the 1 lb. metal coffee cans do work very well. Please donate these so we can continue this wonderful program. Blessings from Marlene

BAGS OF BLESSINGS

DONATIONS NEEDED

Please donate "single-served" food items such as granola bars, fruit cups, pudding cups, 16 oz. water bottles, snack crackers, cookies, peanut butter, etc. in support of this important adjunct ministry to our Free Lunch program. Volunteers are needed to fill the Bags of Blessings which are given out at the Free Lunch Ministry on Thursdays. Any questions, please contact Kathy Rogers, Missions Chair

HOPP
THE MARSHALL OUTREACH
PEOPLE PROJECT

NEW CASTLE COUNTY

4TH FRIDAYS

"connecting people from place to place"

October 24 at 11am

1-888-323-HOPP (4677)
WWW.THEHOPP.ORG

FOOD GIVEWAY SITES

<p>ASBURY AFRESH UMC // 10:00AM 300 E. BASIN RD. NEW CASTLE</p> <p>WILMINGTON MANOR LIONS CLUB // 10:30AM WESTERN SENIOR CENTER 11 BASSETT, NEW CASTLE</p> <p>PENIEL UMC // 11:00AM 115 E MARKET ST. NEWPORT</p> <p>WILMINGTON UNITED LIONS CLUB // 11:00AM CONSCIOUS CONNECTIONS 22 E 23 RD. WILMINGTON</p> <p>RICHARDSON PARK UMC // 11:00AM 11 N MARYLAND AVE. WILMINGTON</p> <p>TREE OF LIFE // 11:30AM 109 GLASGOW DR. NEWARK, DE 19702</p> <p>UNION UMC // 10:00AM 345 SCHOOL BELL RD. BEAR, DE</p>	<p>BETHESDA UMC // 12:00PM 116 E. MAIN ST. MIDDLETOWN</p> <p>DALE LEE HAVEN UMC // 12:00PM 143 E LAKE ST. MIDDLETOWN</p> <p>BUTTONWOOD UMC // 12:00PM 1700 WILMINGTON RD. NEW CASTLE</p> <p>ALDERSGATE UMC // 12:30PM 2313 CONCORD PIKE, WILMINGTON</p> <p>SIMPSON UMC // 12:30PM DELIVERY ONLY WILMINGTON</p> <p>LINDA'S ANGELS CHILD CARE // 1:00PM 6 PARKWAY CT NEW CASTLE</p> <p>INTERFAITH COMMUNITY HOUSING // 2:00PM 617 N WASHINGTON, WILMINGTON</p>
---	--

Pull in RPUMC's 2nd Parking Lot

PARTNERS

ALTAR FLOWERS

October 5 - Beth Robinson

At the Cross - Fran Tebbutt

October 12 - Susan Watkins

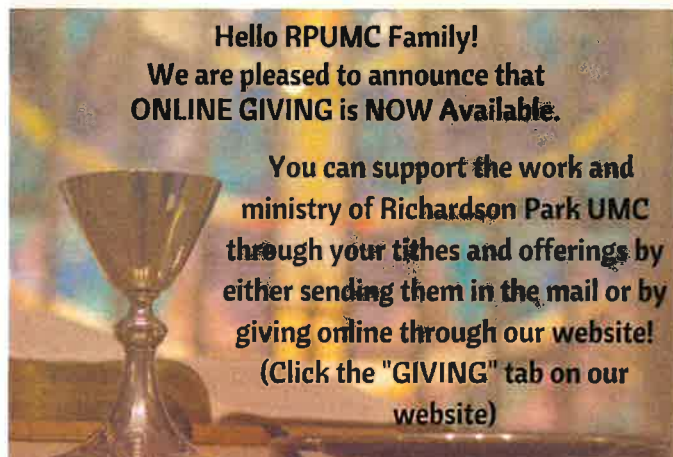
October 19 - Nancy Quillen

October 26 - Kathy Rogers



ONLINE GIVING - TITHES & OFFERINGS

ONLINE GIVING AVAILABLE



www.rpumchurch.org/html/giving.html

**Come join
Scout Troop 339!**



**MONDAY NIGHTS
AT 6:30 PM**

Contact troop339de@gmail.com



**INDIGENOUS
PEOPLE**
day

October 13th



ALTAR FLOWER ORDERS

Please remember that if you would like to dedicate altar flowers "In Honor of" or "In Loving Memory of" a loved one, please submit your order and donation to the church office at least one week before. Thank you.



Women's Al-Anon Meeting

Women's Al-Anon Family Group is an open meeting available to all women on Thursday evenings from 6:30-7:30 pm at Ebenezer United Methodist Church, 525 Polly Drummond Hill Road, Newark, DE 19711. Please use the main front entrance of the church.

The Al-Anon Family Groups are a fellowship of relative and friends of alcoholics who share experience, strength and hope in order to solve their common problems. If you have any questions please call 302-731-9495, Ext. 10.

Recovery Bible Study

For people recovering from drug, alcohol and other addictions, the traditional church is not always the most comfortable place. But two United Methodist deaconesses are changing that with a new Life Recovery Bible Study.

On January 8, 2025, a new online group will begin that combines the best of 12-step recovery programs, the Bible, and the writing John Wesley, Methodism's founder, explained Deaconess Colleen Moskov of St. Mark's UMC in Easton.

The materials used in the group were created by Deaconess Kathy Loomis, who created curriculum for a similar Recovery Bible Study in Colorado. It is designed specifically for United Methodists in the Baltimore-Washington and Peninsula-Delaware Area to combine recovery and spirituality in meaningful and relevant ways.

The 75-minute bi-weekly sessions begin January 8th at 6:30 p.m. Those who wish to participate should contact Kathy Loomis, (kathy.loomis@belongchurch.org) who will send them details about the meeting a few days before the gathering. All are invited. For more information, contact Colleen Moskov at colleenmoskov@gmail.com.

It can be found on the website: <https://www.pen-del.org/newsdetail/recovery-bible-study-18748243>

PACK & PRAY
DAY OF SERVICE

NEW CASTLE COUNTY
KENT COUNTY

JOIN US EVERY MONTH ON THE WEDNESDAY BEFORE THE 4TH FRIDAY
AS WE PREPARE FRESH FRUITS AND VEGETABLES FOR 3000 FAMILIES!

HOLIDAY DATES MAY VARY
October 22
9AM - 1PM EST

New Castle County
ASBURY UMC • 300 E BASIN RD • NEW CASTLE, DE 19720
Kent County
WHAT COAT UMC • 341 SALISBURY RD • DOVER, DE 19904
1-888-323-HOPP (4677) • WWW.THEHOPP.ORG

October Birthdays

Karen Boyd	October 1
Brittany Brown	October 1
Allison Cox	October 2
Chrysta Martin	October 3
Dee Dee Painter	October 3
Jane Thomas	October 3
Tim Williamson	October 3
Alissa Ayala	October 6
Lincoln Klingler	October 6
Roger Longest	October 6
Mike Phillips	October 6
Cheryl Chilcutt	October 7
Angela Buhner	October 8
Jessica Donnelly	October 9
Tony DiMauro	October 10
Logan Phillips	October 10
Kaia Phillips	October 10



Melissa Hughes	October 11
Chelsea Chilcutt	October 12
Sarah Pasmore	October 12
Dan Freebery	October 13
Emma Perugini	October 13
Dennis Earvase	October 16
Yvette Hayman	October 17
Riley Kaucz	October 19
Patrick Donnelly	October 22
Lovedy Berkley	October 26
Dianna Deaton	October 26
Paulette Lazzaro	October 26
Eric Fleming	October 27
Tod Mitten	October 27
Scott Cloud	October 28
Ashley Lang Blevins	October 30
Anthony Steward	October 31

Note: If your name is not listed on our birthday list, please call the church office.

Thank You

Good Morning,

On behalf of the students and staff at Richardson Park Elementary School, I would like to thank each of you who donated supplies to our school. We are grateful that you are a community partner and we appreciate your service and dedication to our school. We will make sure we use these supplies wisely and that all of our students have an opportunity to benefit from your outreach. Again, we appreciate you and thank you!

Respectfully,



Cordie Greenlea
Principal
Richardson Park Elementary School
16 Idella Avenue, Wilmington, DE 19804

o: (302) 992-5570
e: cordie.greenlea@redclay.k12.de.us
redclayschools.com/rpes
Red Clay Consolidated School District

Thanks so much for the donation of supplies for our school. It is greatly appreciated and needed.

Nurse Shelley



Michelle (Shelley) Bridge, RN, MSN, NCSN, NREMT-B, APRN-BC
School Nurse
Robert Wood Johnson & Johnson School Nurse Leadership Fellow
Immediate Past President, Delaware School Nurse Association
Early Years Program and Early Intervention/Child Find - Richardson Park
Autism Support and K-5 Richardson Park Elementary School
99 Middleboro Road, Wilmington DE 19804
#pandapac
o: (302)992-5574 x 330 | f: (302)995-5125
e: Michelle.bridge@redclay.k12.de.us
redclayschools.com/EYP | [facebook](#) | [instagram](#)
Red Clay Consolidated School District



OCTOBER 2025

SUNDAY	MONDAY	TUESDAY	WEDNESDAY	THURSDAY	FRIDAY	SATURDAY
			1 6:30PM Scout Board Mtg.-Lounge	2 9am BMG-Ext. 11am-2pm -The Shoppe at RPUMC 11:30am-12:30pm -Free Lunch-FH	3	4 OPEN First Saturdays' at The Shoppe & Annex at RPUMC
5 WORLD COMMUNION SUNDAY 9AM Adult Sunday School-Lounge 10AM Fellowship Time-Ext. 10:30AM Worship & Children's Church	6	7	8	9 9AM BMG-EXT. 11AM-2PM -The Shoppe at RPUMC 11:30AM-12:30PM -Free Lunch-FH	10 2PM Book Club-Lounge	11
12 9AM Adult Sunday School-Lounge 10AM Fellowship Time-Ext. 10:30AM Worship & Children's Church 11:30AM UWIF Mtg. - Ext.	13 INDIGENOUS PEOPLES' DAY	14	15	16 9AM BMG-EXT. 11AM-2PM -The Shoppe at RPUMC 11:30AM-12:30PM -Free Lunch-FH	17	18 EXT. RESERVED 11AM Koinonia Mtg.-Lounge
19 LAITY SUNDAY 9AM Adult Sunday School-Lounge 10AM Fellowship Time-Ext. 10:30AM Worship & Children's Church 11:30AM Trustee Mtg.-Lounge	20  Messenger Deadline Articles Due	21	22	23 9AM BMG-EXT. 11AM-2PM -The Shoppe at RPUMC 11:30AM-12:30PM -Free Lunch-FH	24 6PM Crafting Night -Lounge 	25
26 FH RESERVED 8AM Scout Pancake Breakfast Fundraiser-FH 9AM Adult Sunday School-Lounge 10AM Fellowship Time-Ext. 10:30AM Worship & Children's Church	27	28	29	30 9AM BMG-EXT. 11AM-2PM -The Shoppe at RPUMC 11:30AM-12:30PM -Free Lunch-FH	31 HALLOWEEN	

**COME ON OUT & SHOP AT
THE SHOPPE AT RPUMC**
on Thursdays 11 AM-2 PM
and select **FIRST SATURDAYS'**

PRE-LOVED GOODS

DISCOVER GREAT FINDS.

Thank you for supporting the mission



@rpumchurch.org

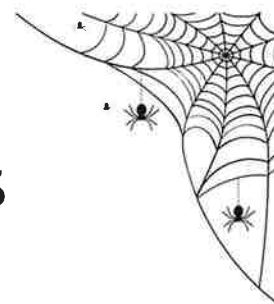
**PROCEEDS BENEFIT
MISSIONS/OUTREACH**



The Messenger



October 2025



RICHARDSON PARK UNITED METHODIST CHURCH

11 NORTH MARYLAND AVENUE
WILMINGTON, DE 19804-1305
Office: (302) 654-0961
E-Mail: rpumc@rpumchurch.org
Website: www.rpumchurch.org

Rev. Anthony A. Arrington
E-Mail: pastor@rpumchurch.org
Office Hours: 9 a.m.-3 p.m. M-F
Administrative Assistant: Jennifer Boyce



In-Person and **Live Streaming** Sunday Worship Services
at the following sites:

rpumchurch.org/html/streaming_service.html or
Facebook at: facebook.com/rpumchurch

Sunday School.....9:00 A.M.
Fellowship Time.....10:00 A.M.
Worship & Children's Church.....10:30 A.M.



Please have articles and information for the November
Messenger to the Church Office by Monday, October 20th.
Remember to submit all announcements for the Sunday
Bulletin no later than Wednesday. Email to:
rpumc@rpumchurch.org
Thank you! ~Jen



*The purpose of Richardson Park United Methodist Church is to help people experience
the amazing love of God and develop a vital relationship with Jesus Christ.*