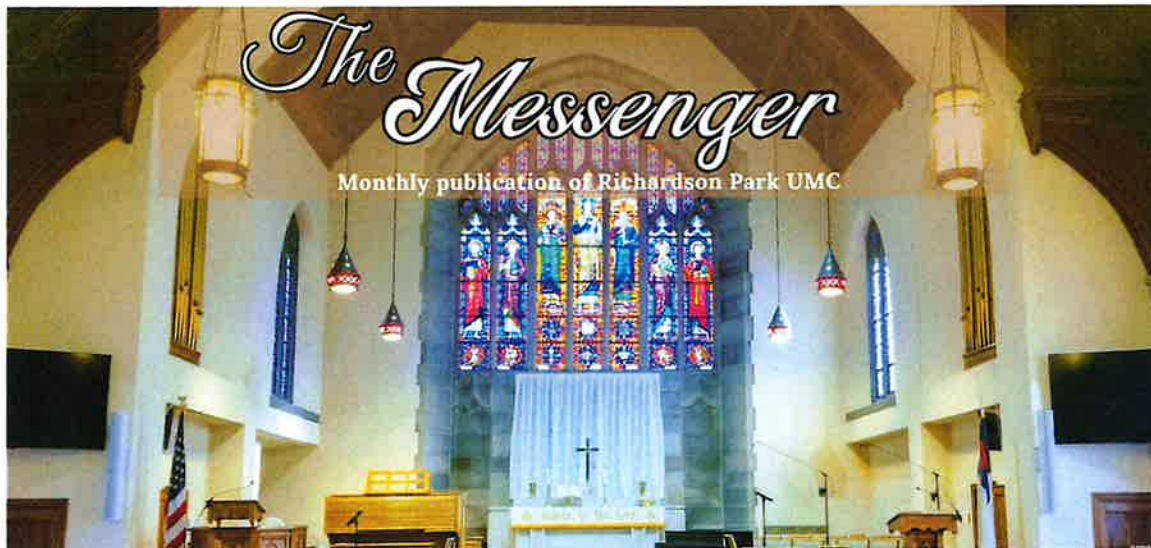


APRIL 2025



## A WORD FROM OUR PASTOR

*Written by Rev. Anthony A. Arrington*

Dear Sisters and Brothers in Christ,

As April unfolds, we are greeted by the blossoming of spring—a season of renewal, hope and fresh beginnings. The vibrant colors of nature remind us of the beauty of creation and the promise of life. It's a time to step outside, breathe in the crisp air, and marvel at the wonders of God's handiwork. It's also a good time to observe nature surrounding us and possibly fish.

This month, we also celebrate Easter, a cornerstone of the Christian faith. As we reflect on Christ's sacrifice and triumph over death, Easter is a powerful reminder of redemption and grace. The empty tomb is a testament to the hope and salvation we have in Jesus Christ. Let us take this opportunity to renew our faith and share the love of Christ with those around us. Moreover, we are delighted to continue our Easter services with Peniel UMC and our Easter EGGStravaganza.

Looking ahead, the coming months offer us opportunities to deepen our spiritual journey and grow in community. Here's what we can look forward to:

- **Outreach and Fellowship:** As the weather warms, churches and ministries often organize outdoor events, such as picnics, prayer walks, and service projects. These are wonderful opportunities to connect with others and live out the gospel through acts of kindness.
- **Planning for Summer Retreats:** April is a great time to start thinking about summer retreats or camps that offer a chance to recharge spiritually and strengthen bonds with fellow believers.
- **Growing in Faith:** Consider joining Bible study groups or devotional gatherings to explore God's Word more deeply. As spring reminds us of growth and renewal, let's seek to grow spiritually as well.

Let us embrace this season with gratitude and joy, remembering that through every bud and bloom, God's love is evident. Wishing you a blessed April and joyful Easter!

In His Grace,  
Rev. Anthony A. Arrington  
Interim Pastor

*The purpose of Richardson Park United Methodist Church is to help people experience the amazing love of God and develop a vital relationship with Jesus Christ.*



United  
Women  
in Faith

## UNITED WOMEN IN FAITH

BY MARLENE JOHNSON

The season of Lent is here—a time of reflection. God provides each of us a glimpse of hope when we see flower bulbs pushing up through the ground. Take a walk and notice those beautiful spring flowers!

On April 13th, we will meet for a short meeting after church in the extension. Yes, it is Palm Sunday but we voted to meet. Please join our wonderful group of dedicated women who meet each month.

I must extend a heartfelt thank you to each one of you who attended our remembrance of the Upper Room Meal. It was wonderful to see all of you. That time together always seems to be very meaningful as we step back in time to remember.

Now, my sisters in faith:

1. Your monthly question—what kind word or simple gesture can you extend to someone?
2. Read Ephesians 2:10
3. Attend our meeting on April 13th.

A closing prayer:

Dear Father, please open my eyes to see how I can be kind to someone today.

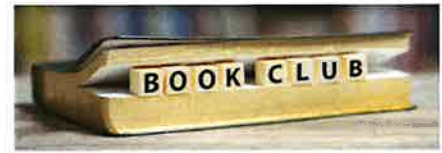
Blessings from your sister in faith, Marlene

## THE CHILDREN'S CORNER

BY MARLENE JOHNSON

Happy Spring to all of our children who attended Children's Church. Have you seen those yellow flowers pushing up through the ground? God does give us lots of reasons for hope in His world. We have a new song to sing, a fun song and dance, more experiments and more Bible stories. Wow, that is exciting! I will be waiting for you in the back of the sanctuary where we meet by 10:30 am each Sunday morning. I do hope you come and join the adventures awaiting to be discovered in the Bible.

Blessings from Ms. Marlene



## BOOK CLUB

BY PAUL WEAVER

Our March meeting was held on Friday, March 14th at 2 pm at the church. We discussed "Who is Maud Dixon" by Alexandra Andrews. We had a very interesting discussion.

Our April meeting will be on Friday, April 11th at 2 pm at the church. We will discuss "Remarkably Bright Creatures" by Shelby Van Pelt, the book selected by New Castle Reads for their event for 2025. That event is scheduled for Tuesday, April 15, 2025 at 7 pm at the Chase Center. We will enjoy dinner at Iron Hill Brewery before the event at 5:30 pm. If you want to participate in these events, please contact me or Kathy Rogers.

Our May meeting will be on Friday, May 9th at 2 pm at the church. We will discuss "Hidden Pictures" by Jason Rekulak.

Coming attractions include "The Wedding Planner" by Danielle Steel, "Dreamland: A Novel" by Nicholas Sparks, "The Housemaid's Secret" by Freida McFadden, "The Book Woman of Troublesome Creek" by Kim Michele Richardson, and several books by Ariel Lawhon ("The Frozen River" and "Flight of Dreams").

## FREE LUNCH MINISTRY

BY JOE TUCKER

Free Lunch program is continuing every Thursday 11:30 am to 12:30 pm with a grab-n-go lunch. We deliver a hot lunch in a take-out container from Fellowship Hall. Each person also receives a bag of crackers, power bars, a bottle of water, cup of pudding, etc. Our group of dedicated volunteers work Wednesday morning preparing food and 'bags of blessings' to hand out on Thursday morning. We are averaging about 130 meals a week. Contributions of items are always accepted. Currently, Free Lunch is in need of **plastic grocery shopping bags** at this time.

Some church members pick up meals and deliver them to family and elderly neighbors. Thank you to all volunteers who help on Wednesday and Thursday to prepare and serve free lunch!! Thank you. Joe



## TECHNOLOGY TIPS

BY JIM CHILCUTT

This is article 3 of 3 about what to do with all the photos on your cell phone. Over time the available space in memory runs out or you sell the phone or lose the phone.

At this point, the objective is to get the photos someplace safe and accessible. The easiest place to dump your photos is on the hard drive of your computer. Technically this is simple but can vary based on the type of cell phone. The easiest method is to simply connect your phone and computer using the phone charging cable and usb ports. Plug the proper end of the cable into a usb port on the computer and other end into the charging port of the cell phone. It's best to do the connecting in that order. The computer should recognize your phone as a connected device, and it should be on the hard drive in the folder named with your cell phone name. Double click on the cell phone folder to see what is there. There should be several folders, and one is named DCIM. DCIM is the folder most devices use to store photos.

It would be wise to make two copies of the photos on different drives in case one gets corrupted. These steps listed above should give a reasonable level of protection from losing any photos. Another task is to review all the photos and organize them but that is a different topic.

If there is a special topic you want to see just send a note to [rpumc@rpumchurch.org](mailto:rpumc@rpumchurch.org).



## MEMORIAL TREE

BY GLENDA DONNELLY

Thanks to the great work of the Trustees and the BMG, we have a beautiful Memorial Tree to recognize all our loved families and friends who have passed.

Take a moment and stop by the Extension and see the Memorial Tree. If you are interested in adding a loved one's name to the Memorial Tree, there are forms located on the table near the Tree. Any questions, please contact Glenda Donnelly at (302) 998-5047 or call the Church Office.

Thank you. Glenda

## FLOWER CONTAINERS NEEDED

We love delivering altar flowers to shut-ins and they love the visit BUT we are in need of containers. I have found the 1 lb. metal coffee cans do work very well. Please donate these so we can continue this wonderful program. Blessings from Marlene

## BAGS OF BLESSINGS

### DONATIONS NEEDED

Please donate "single-served" food items such as granola bars, fruit cups, pudding cups, 16 oz. water bottles, snack crackers, cookies, peanut butter, etc. in support of this important adjunct ministry to our Free Lunch program. Volunteers are needed to fill the Bags of Blessings which are given out at the Free Lunch Ministry on Thursdays. Any questions, please contact Kathy Rogers, Missions Chair





## ONLINE GIVING - TITHES & OFFERINGS

ONLINE GIVING AVAILABLE



**Hello RPUMC Family!**  
 We are pleased to announce that **ONLINE GIVING** is NOW Available.

You can support the work and ministry of Richardson Park UMC through your tithes and offerings by either sending them in the mail or by giving online through our website! (Click the "GIVING" tab on our website)


[www.rpumchurch.org/html/giving.html](http://www.rpumchurch.org/html/giving.html)




### ALTAR FLOWER ORDERS

Please remember that if you would like to dedicate altar flowers "In Honor of" or "In Loving Memory of" a loved one, please submit your order and donation to the church office at least one week before. Thank you.





### Women's Al-Alon Meeting

Women's Al-Anon Family Group is an open meeting available to all women on Thursday evenings from 6:30-7:30 pm at Ebenezer United Methodist Church, 525 Polly Drummond Hill Road, Newark, DE 19711. Please use the main front entrance of the church.

The Al-Anon Family Groups are a fellowship of relative and friends of alcoholics who share experience, strength and hope in order to solve their common problems. If you have any questions please call 302-731-9495, Ext. 10.

## Come join Scout Troop 339!



**MONDAY NIGHTS AT 6:30 PM**

Contact [troop339de@gmail.com](mailto:troop339de@gmail.com)

### Recovery Bible Study

For people recovering from drug, alcohol and other addictions, the traditional church is not always the most comfortable place. But two United Methodist deaconesses are changing that with a new Life Recovery Bible Study.

On January 8, 2025, a new online group will begin that combines the best of 12-step recovery programs, the Bible, and the writing John Wesley, Methodism's founder, explained Deaconess Colleen Moskov of St. Mark's UMC in Easton.

The materials used in the group were created by Deaconess Kathy Loomis, who created curriculum for a similar Recovery Bible Study in Colorado. It is designed specifically for United Methodists in the Baltimore-Washington and Peninsula-Delaware Area to combine recovery and spirituality in meaningful and relevant ways.

The 75-minute bi-weekly sessions begin January 8th at 6:30 p.m. Those who wish to participate should contact Kathy Loomis, ([kathy.loomis@belongchurch.org](mailto:kathy.loomis@belongchurch.org)) who will send them details about the meeting a few days before the gathering. All are invited. For more information, contact Colleen Moskov at [colleenmoskov@gmail.com](mailto:colleenmoskov@gmail.com).

It can be found on the website: <https://www.pen-del.org/newsdetail/recovery-bible-study-18748243>

### Urgent Call for Volunteers Strengthen Our Disaster Response Team Today!

The Peninsula-Delaware Disaster Response and Recovery Team urgently needs your help. Since the COVID-19 pandemic in 2020, our pool of trained Early Response Team (ERT) members has drastically diminished. These teams, typically composed of six to eight members skilled in various disaster recovery tasks, are crucial for effective disaster response. Currently, only two trained members remain in our Conference, severely limiting our ability to respond to emergencies.

We need more volunteers to step up and get trained. Basic ERT training is just 8 hours, with advanced courses taking 4 hours each. Training can be arranged at your church, and multiple churches can collaborate to host these sessions. Volunteers do not need to be church members but must align with our UMC beliefs.

Click the link below to sign up for training or to get more information. The Disaster Relief Team will reach out to you with all the details you need and answer any questions you might have. Your participation can make a big difference!

<https://pendel-reg.brapp.com/DisasterRelief>



# APRIL BIRTHDAYS

Dawn Davis April 1  
 Paul Weaver April 2  
 Robert Boyd April 8  
 Edward Rash April 9  
 Kelly Gibbons April 11  
 Marie Walker April 11  
 Christopher Sutor April 16  
 Amber Saienni April 18  
 Richard Sutor April 18  
 Julie Gibbons April 19  
 Kirlynn Phillippe April 20



Robert Boyd, Jr. April 21  
 Katherine Burge April 22  
 Robert Collins, Jr. April 22  
 Howard Eney April 23  
 Kathy Rogers April 23  
 Linda Keffer April 24  
 Jennifer Swarter April 24  
 Trisha Parks April 25  
 Shirley Delpizzo April 27  
 Debbie Freebery April 27  
 Daniel Swain April 29

Note: If your name is not listed on our birthday list, please call the church office.



Good Friday  
 cluster Service  
 with Peniel UMC  
 April 18th at 12 pm  
 at Richardson Park UMC

**HOPP** THE HARVEST OUTREACH PEOPLE PROJECT  
 NEW CASTLE COUNTY

## 4TH FRIDAYS

"connecting people from place to place"

April 25 at 11am

1-888-323-HOPP (4677)  
 WWW.THEHOPP.ORG

**FOOD GIVEWAY SITES**

ASBURY AFRESH UMC // 10:00AM 300 E. BASIN RD. NEW CASTLE	BETHESDA UMC// 12:00PM 116 E. MAIN ST. MIDDLETOWN
WILMINGTON MANOR LIONS CLUB // 10:30AM WESTERN SENIOR CENTER 11 BASSETT, NEW CASTLE	DALE LEE HAVEN UMC// 12:00PM 143 E. LAKE ST. MIDDLETOWN
PENIEL UMC // 11:00AM 115 E MARKET ST NEWPORT	BUTTONWOOD UMC // 12:00PM 1700 WILMINGTON RD NEW CASTLE
WILMINGTON UNITED LIONS CLUB // 11:00AM	ALDRSGATE UMC // 12:30PM
CONSCIOUS CONNECTIONS 22 E 23 RD WILMINGTON	2313 CONCORD PIKE, WILMINGTON
RICHARDSON PARK UMC // 11:00AM 11 N MARYLAND AVE. WILMINGTON	SIMPSON UMC // 12:30PM DELIVERY ONLY, WILMINGTON
TREE OF LIFE // 11:30AM 109 GLASGOW DR. NEWARK, DE 19702	LINDA'S ANGELS CHILDCARE // 1:00PM 6 PARKWAY CT NEW CASTLE
UNION UMC // 10:00AM 345 SCHOOL BELL RD. BEAR, DE	INTERFAITH COMMUNITY HOUSING // 2:00PM 613 N WASHINGTON, WILMINGTON

Easter Sunday  
 Service  
 April 20th  
 at 10:30 a.m.

### PARTNERS



Pull in RPUMC's 2nd  
 Parking Lot

**PLEASE JOIN US FOR AN  
AFTERNOON OF COMMUNITY FUN!**

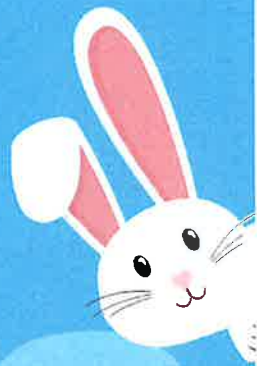
# **EASTER EGGSTRAVAGANZA**

at Richardson Park United Methodist Church

**Saturday, April 5th from 1-4 pm**

**EGG HUNT, BOUNCY HOUSE,  
FOOD & FUN FOR EVERYONE!**

Children will have a hoppin' good time  
with the Easter bunny!!



Happy

Easter

**Egg Hunt start times:  
Little Kids-2 pm  
Older Kids-2:30 pm**

11 N. Maryland Ave., Wilmington, DE 19804





**FREE ADMISSION! BRING YOUR BASKET!**



[www.rpumchurch.org](http://www.rpumchurch.org)

**Rain date: 4/6/25**

# APRIL 2025

SUNDAY	MONDAY	TUESDAY	WEDNESDAY	THURSDAY	FRIDAY	SATURDAY
		<b>1 APRIL FOOL'S DAY</b>	<b>2</b> 6:30PM Scout Board Mtg. - Lounge	<b>3</b> 9AM BMG-EXT. 11AM-2PM -The Shoppe at RPUMC 11:30AM-12:30PM -Free Lunch-FH	<b>4</b>	<b>5</b> 1-4PM Easter EGGStravganza  <b>11-2 OPEN First Saturdays'</b> at The Shoppe & Annex at RPUMC
<b>6</b> 9AM Adult Sunday School-Lounge 10AM Fellowship Time-Ext. 10:30AM Worship & Children's Church	<b>7</b>	<b>8</b>	<b>9</b>	<b>10</b> 9AM BMG-EXT. 11AM-2PM -The Shoppe at RPUMC 11:30AM-12:30PM -Free Lunch-FH	<b>11</b> 2PM Book Club-Lounge	<b>12</b>
<b>13 PALM SUNDAY</b> 9AM Adult Sunday School-Lounge 10AM Fellowship Time-Ext. 10:30AM Worship & Children's Church 11:30AM UWIF Mtg.-Ext.	<b>14</b>	<b>15</b> 5:30 PM Book Club Dinner-Iron Hill 7PM Book Club New Castle Reads Event-Chase Center	<b>16</b>	<b>17</b> 9AM BMG-EXT. 11AM-2PM -The Shoppe at RPUMC 11:30AM-12:30PM -Free Lunch-FH	<b>18 GOOD FRIDAY</b> 12PM Good Friday Service at Richardson Park UMC 	<b>19 FH RESERVED</b> 11AM Koinonia Mtg.-Ext.
<b>20 EASTER</b> 9AM Adult Sunday School-Lounge 10AM Fellowship Time-Ext. 10:30AM Worship & Children's Church	<b>21</b>  <b>Messenger Deadline Articles Due</b>	<b>22 EARTH DAY</b> 	<b>23</b>	<b>24 ADMINISTRATIVE PROFESSIONALS DAY</b> 9AM BMG-EXT. 11AM-2PM -The Shoppe at RPUMC 11:30AM-12:30PM -Free Lunch-FH	<b>25</b>	<b>26</b>
<b>27</b> 9AM Adult Sunday School-Lounge 10AM Fellowship Time-Ext. 10:30AM Worship & Children's Church	<b>28</b>	<b>29</b>	<b>30</b>			

**COME ON OUT & SHOP AT  
THE SHOPPE AT RPUMC**

**on Thursdays 11 AM-2 PM  
and select FIRST SATURDAYS'**

**PRE-LOVED GOODS  
DISCOVER GREAT FINDS**



Thank you for supporting the mission



@rpumchurch.org

PROCEEDS BENEFIT  
MISSIONS/OUTREACH

*The Messenger*



April 2025

**RICHARDSON PARK UNITED METHODIST CHURCH**

11 NORTH MARYLAND AVENUE  
WILMINGTON, DE 19804-1305  
Office: (302) 654-0961  
E-Mail: [rpumc@rpumchurch.org](mailto:rpumc@rpumchurch.org)  
Website: [www.rpumchurch.org](http://www.rpumchurch.org)

Rev. Anthony A. Arrington  
E-Mail: [pastor@rpumchurch.org](mailto:pastor@rpumchurch.org)  
Office Hours: 9 a.m.-3 p.m. M-F  
Administrative Assistant: Jennifer Boyce



---

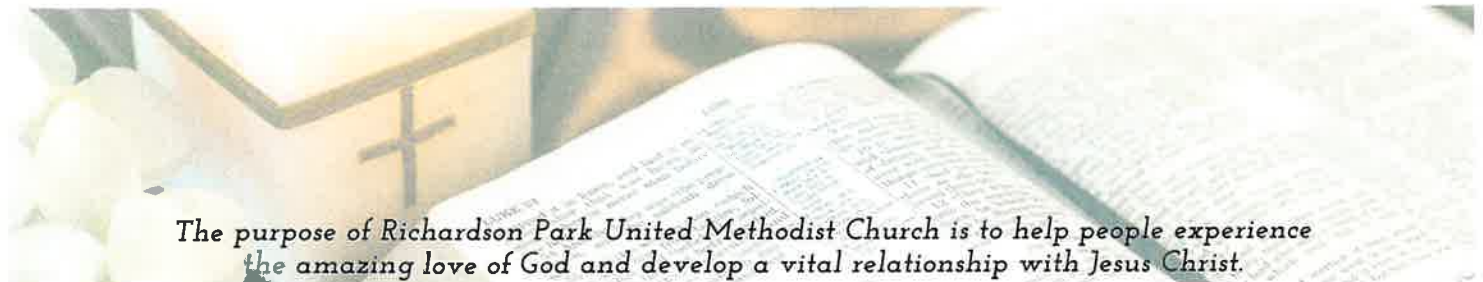
In-Person and **Live Streaming** Sunday Worship Services  
at the following sites:

[rpumchurch.org/html/streaming\\_service.html](http://rpumchurch.org/html/streaming_service.html) or  
Facebook at: [facebook.com/rpumchurch](https://facebook.com/rpumchurch)

Sunday School.....9:00 A.M.  
Fellowship Time.....10:00 A.M.  
Worship & Children's Church.....10:30 A.M.



Please have articles and information for the May  
Messenger to the Church Office by Wed., April 21st.  
Remember to submit all announcements for the Sunday  
Bulletin no later than Wednesday. Email to:  
[rpumc@rpumchurch.org](mailto:rpumc@rpumchurch.org)  
Thank you! ~Jen



*The purpose of Richardson Park United Methodist Church is to help people experience  
the amazing love of God and develop a vital relationship with Jesus Christ.*