

JULY 2021



A WORD FROM OUR PASTOR

Written by Rev. Carolyn Williams

"The clever see danger and hide; but the simple go on, and suffer for it." Proverbs 22:3

On May 21st the state of Delaware lifted its mask mandate for indoor gatherings. However our denominations has advised churches to continue following the CDC guidelines. Since cases of the new COVID variants are popping up in states along with the current strain, we must keep as many people safe as possible. There are several cases reported of people who have been fully vaccinated contracting COVID.

I know many are ready to strip the mask but we must remember to use wisdom. I have listed the recommendations from our conference as we move forward.

- **Masks:** Wear masks when the church becomes crowded or if there are vulnerable people present who have not been vaccinated. (We will not ask for proof therefore mask will remain in place)
- **Singing:** Social distancing between members of the ensemble and the congregation should be followed.
- **Communion:** Pre-packaged, sanitized communion packets continue to be the best option.
- **Small Groups & Bible Studies:** Bible studies and small groups can meet in person. Masks should be worn when unvaccinated individuals are present. We recommend maintaining some online options for high-risk individuals and those who do not feel comfortable being in public. (Since we do not regulate outside groups who use our facilities, especially those who want their members to remain anonymous, we cannot open our facilities to them yet.)
- **Office:** Office functions can resume as normal. Telework is still encouraged, where possible.
- **General Building:**
 - Post signs indicating symptoms and urging people to stay at home and seek medical attention if they have flu-like symptoms.
 - Maintain a good stock of tissue, soap, hand sanitizer, and disposable paper towels for drying hands.
 - Continue to diligently clean after the building has been in use.
 - If you become aware of someone in the church or a building who is infected with COVID-19, put your communication plan into action, and cooperate fully with contact tracers.

We may feel inconvenienced a little longer but we must look at the overall picture. In the midst of it all, God is still God and calling us to be the church.

Blessings,

Pastor Carolyn

The purpose of Richardson Park United Methodist Church is to help people experience the amazing love of God and develop a vital relationship with Jesus Christ.

UNITED METHODIST WOMEN

BY MARLENE JOHNSON

The past months have been a time of reflection and trust in God for all of us. I have learned from this experience- as I am sure all of you have. Put God first and kindness to others really matters. All of you have supported the "cards for shut-ins". This project is still vital to these folks. I thank you very much for the on-going support!

Now, many ladies have asked about circle- when, where, how will we meet. Answer: I spoke with Pastor Carolyn and explained my idea. We gather for church each Sunday. Many ladies do not have additional transportation or have trouble driving at night. My solution (Pastor agreed): We will meet the second Sunday of September in the extension. This will be a short 30 to 45 minute meeting following the worship service. No refreshments will be served- just a meet and greet get-together. We will go forward in the following months. It will be so exciting to say "hi"! The object of this idea is to draw more ladies into our wonderful fellowship. I do hope to see you at the meeting!

Now your assignment: Read Proverbs 3:3 and Romans 15:7

Blessings for a wonderful July!
Marlene

p.s. Remember, the best portion of a good person's life is their little, nameless, unremembered acts of kindness and love.

FREE LUNCH MINISTRY

BY JOE TUCKER

Free Lunch program is continuing every Thursday 11:30 am to 12:30 pm with a grab-n-go lunch. We deliver a hot lunch in a take-out container at the main door of the church. Each person also receives a bag of crackers, power bars, a bottle of water, cup of pudding, etc. Our group of dedicated volunteers work Wednesday morning preparing food and 'bags of blessings' to hand out on Thursday morning. We are averaging about 50 meals a week. Contributions of items are always accepted. Currently, Free Lunch is in need of gallon storage bags at this time.

Some church members pick up meals and deliver them to family and elderly neighbors. Thank you to all volunteers who help on Wednesday and Thursday to prepare and serve free lunch!!
Thank you. Joe



BY PAUL WEAVER

On Wednesday, June 9, we met at 7 pm on Zoom to discuss "The Storied Life of AJ Fikry", by Gabrielle Zevin. We had a very interesting discussion about the book.

During the next month, we will read "Too Good to be True", by Carola Lovering. All are invited to read the book and join us on Thursday, July 15 at 7 pm in the Lounge. Expect lively conversation and good fellowship.

Stay tuned, as we have been holding our copies of the second book in Rev. Robyn Brown's trilogy, "SAM. A Ghost Story" in hopes that we can have her join us at the church. Rev. Brown's visit to RPUMC to discuss "Ben" was a book club highlight, and we are hoping that (in time), she will be able to join us again. Look for additional communication, Coming attractions will include "The Four Winds", by Kristin Hannah and "In a Book Club Far Away" by Tif Marcelo. In addition, on October 22, 2021, at 7 pm we will visit the Chase Center to hear Min Jin Lee speak, after dinner at Iron Hill Brewery @ 5 pm. Min Jin Lee is the author of "Pachinko" and her talk was originally planned for last April.

Thank you. Paul

BAGS OF BLESSINGS

DONATIONS NEEDED

Please donate "single-served" food items such as granola bars, fruit cups, pudding cups, 16 oz. water bottles, snack crackers, cookies, peanut butter, etc. and zip-lock gallon sized storage bags in support of this important adjunct ministry to our Free Lunch program. Volunteers are needed to fill the Bags of Blessings which are given out at the Free Lunch Ministry on Thursdays. Any questions, please contact Kathy Rogers, Missions Chair



MISSIONS TEAM - RECONVENING

JULY 11, 2021

BY KATHY ROGERS

The RPUMC Missions Team will be reconvening on July 11, 2021 after Worship Service at 11:30 am in the church Lounge. We'll meet briefly to discuss putting together 100 school kits in early August for donation to children in need before the next school year begins. We'll be looking for volunteers to help with collecting supplies and making up the school kits once a date is set for the event. We'll also discuss distribution of budgeted funds to various organizations supported by our Missions Team. All are welcomed to attend the Missions Team meetings and events or join the team and become part of the ongoing mission to serve others as Jesus did! Contact Kathy Rogers or Marlene Johnson if you have any questions or would like to join the RPUMC Missions Team.

Thanks. Kathy



MEMORIAL TREE

BY GLENDA DONNELLY

Thanks to the great work of the Trustees and the BMG, we have a beautiful Memorial Tree to recognize all our loved families and friends who have passed.

Take a moment and stop by the Extension and see the Memorial Tree. If you are interested in adding a loved one's name to the Memorial Tree, there are forms located on the table near the Tree. Any questions, please contact Glenda Donnelly a call on (302) 998-5047 or call the Church Office.

Thank you. Glenda

SUNDAY MORNING ADULT BIBLE STUDY RESTARTS ON 9/19/21

BY KATHY ROGERS

The Wesley Adult Bible Study Class will be restarting on Sunday mornings at 9 am in the church lounge beginning September 19, 2021. Currently, we follow the Cokesbury Adult Bible Studies program which includes a Teacher's Guide, Student Guides and a DVD with short videos for each lesson. This format allows for the Facilitator to direct the weekly learning using mixed media and also provides opportunity for interesting group discussion, all in about 1 hour! For now, Kathy Rogers will act as the facilitator each Sunday morning. If you are interested in learning more about the Bible and participating either as a facilitator or student, please contact the church office and provide your name and contact information or plan to meet in the lounge on 9/19/21 at 9 am. We hope to see you there!



ALTAR FLOWERS

July 4-Phyllis Bowman

-Mary Alice Bair

July 11-Harold Ritter

At the Cross: Shirley Roberts

July 18-Julia Lynch

At the Cross: Roger Longest

July 25-Janet Dickerson

Greeter-Neal Davis

Lay Readers-To be announced



ONLINE GIVING - TITHES & OFFERINGS

ONLINE GIVING NOW AVAILABLE

Hello RPUMC Family!

We are pleased to announce that ONLINE GIVING is NOW Available! During this time of social distancing and quarantine, you can still support the work and ministry of Richardson Park UMC through your tithes and offerings by either sending them in the mail or now by giving online through our website!

(Click the "GIVING" tab on our website).

www.rpumchurch.org/html/giving.html

ST Mark's UMW Outside Yard Sale

- July 17th 8AM-Noon
- Rain or Shine
- Vendor spaces by contract only \$30 ea
- BYO Table/Shelter
- Contact Church Office at 302-994-0400 for contract/payment



GRIEF SHARE

GRIEF RECOVERY SUPPORT GROUP



WEDNESDAY AT 7:00 PM
STARTING OCTOBER 7TH

SESSION 1 - 10/7/20
 SESSION 2 - 11/4/20
 SESSION 3 - 12/2/20
 SESSION 4 - 12/16/20
 SESSION 5 - 01/6/21
 SESSION 6 - 02/3/21
 SESSION 7 - 03/3/21

SESSION 8 - 04/7/21
 SESSION 9 - 05/5/21
 SESSION 10 - 06/2/21
 SESSION 11 - 07/7/21
 SESSION 12 - 08/4/21
 SESSION 13 - 09/8/21

SIGN-UP TODAY!! <https://www.griefshare.org/groups/126159>

www.griefshare.org

**Peniel Soup Kitchen
Will be Reopening
September 18, 2020
10:30 to 12:30—Every Friday**

Pick Up Free Lunch—Goodie Bag For All

Looking forward to seeing all of our friends again. Please come everyone.



WELCOME!



Lunch & Learn

Every Thursday 12:30pm-1:00pm
March - December

Delaware Hospice and Honoring Choices® Delaware have teamed up to launch our virtual informational Lunch & Learn series featuring speakers from Delaware Hospice, Honoring Choices® Delaware, and community experts on a variety of topics. Lunch & Learns are **free** conversations.

For additional information and registration please visit www.delawarehospice.org/events

2021
LUNCH & LEARN

chance care comfort
DELAWARE HOSPICE
Since 1982

Delaware Hospice staff is here to help and support you.
Call 800-838-9800

Save THE Date

July 23 - 24, 2021



There's a Battle in Every Pew

The reality of mental illness in the church, and pathways to mental health
2-Day Workshop

Friday, July 23--Keynote with Q&A (← click the hyperlink to register)

"The Why of Suicide and the How of Hope."

Register at www.pen-del.org

This talk tells the story of David's journey from mental "hellness" to mental wellness. Area of focus will be:

- What it is like to live with a crippling mental illness.
- What mental illness feels like, what it is, and what it is not.
- The signs and the symptoms to look for in others.
- The critical need to put one's self-care on a pedestal.
- How to leverage recognition, curiosity, and expression to create connection.

Saturday, July 24—Two Interactive Workshops (← click the hyperlink to register)

"I don't know what to say. Learning the language of mental health".

This workshop looks at the use of language to support someone in the throes of a mental illness, or someone who is enduring the loss of someone to suicide. Areas of focus will be:

- How to use listening to create connection
- How to recognize the hidden need behind a person's words.
- The power of curiosity to slow the speed of thought.
- The well-intentioned things we say that are harmful to others.
- A variety of expressions that are helpful to someone suffering.

"Rebuilding a life divided into a life united: leveraging whole person care to build and maintain mental health."

This workshop examines what it takes to rebuild a life that has been destroyed by mental illness, suicide, or trauma of any kind. Areas of focus will be:

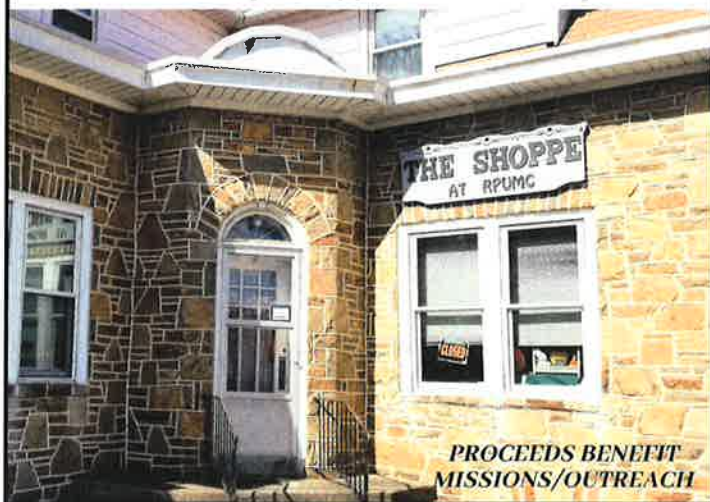
- The essentials for creating a blueprint for a new life.
- The steps required to build anew after loss and trauma.
- The new role each of us can assume on our communities.



DAVID WOODS BARTLEY
DAVID@DAVIDWOODSBARTLEY.COM
(916) 247-6389

The Shoppe at RPUMC

The Shoppe at RPUMC is open for shopping in the afternoons and by appointment only on Thursdays. Give Sandy a call (302) 593-3395
Schedule your appointment today!!



OFFICIAL DE COVID-19 WEBSITE coronavirus.de.gov

The website will provide you with information and updates on a regular basis. Find out where you can get vaccinated, and answers to frequently asked questions. Questions about the vaccine? Contact the Division of Public Health Vaccine Call Center at 1-833-643-1715. The call center is open from 8:30 am-4:30 pm, M-F, and 10 am-4 pm on Saturday. Or email Vaccine@delaware.gov

General questions about coronavirus? Call 2-1-1 or for people who are deaf or hard of hearing, please text your ZIP code to 898-211. For those with specific health-related questions, email DPHCall@delaware.gov

New Chief Administrative Office Named



The Rev. Erica Robinson-Johnson has been appointed to serve in the newly created position of Chief Administrative Officer of the Baltimore-Washington and Peninsula-Delaware conferences.

In this new role, she will work with Bishop LaTrelle Easterling, helping to oversee the successful affiliation of the two conferences while performing many of the administrative duties of the episcopal office.

The two annual conferences will begin this new, affiliated relationship, sharing a bishop and many ministry resources, in September. Robinson-Johnson's appointment begins July 1.

Currently serving as the Director of Connectional Ministries and Assistant to the Bishop in the New England Conference, Robinson-Johnson "will bring new eyes and fresh perspectives to this critically important work," Bishop Easterling said:

"It was very important to me that I have the expertise of an objective leader in this role," she continued. "As the two conference's leadership teams began meeting over a year ago to talk about collaborative ministry, one thing became exceedingly clear - The Peninsula-Delaware Conference was concerned that they would become the stepchild in this affiliation. Rev. Robinson-Johnson is a self-differentiated, yet deeply experienced leader who shares my commitment to equity in this endeavor."

"We will be exploring and trying new things as we move into the affiliation, discovering the best possible structure to enable 100 percent of our churches to be 100 percent fruitful and effective in their ministry," the bishop said. "Rev. Robinson-Johnson is the ideal person to help lead this work. Her administrative gifts and ability to oversee complexity and growth are unparalleled."

Robinson-Johnson has served in ordained ministry for 26 years. In addition to being the Director of Connectional Ministries and assistant to Bishop Sudarshana Devadhar in the New England Conference, she has served four churches in Massachusetts and Illinois, as an adjunct professor at Garrett Evangelical Theological Seminary in Evanston, Ill., as a chaplain at Yellowstone National Park, and in numerous leadership positions throughout the denomination.

Over the past eight years, in particular, Robinson-Johnson has developed an outstanding reputation as someone who sets high expectations and consistently meets them with excellence and grace. Combining two complex jobs, as Assistant to the Bishop and Director of Connectional Ministries, she had to consistently shape her ministry and employ her considerable supervisory and administrative skills to meet the conference's changing needs. She consistently excelled at making connections that helped people and the church grow stronger.

TECHNOLOGY TIPS - STREAMING WEB CONTENT TO YOUR TV

BY JIM CHILCUTT

There are a lot of ways to stream to your TV. Below is a link to a website I found with a pretty comprehensive description of what you need to stream content.

www.allconnect.com/blog/beginners-guide-to-tv-streaming.

You can find a copy of the newsletter on our website www.rpumchurch.org under the "Whats Happening" tab that will give the link for you to cut and paste.

If there is a special topic you want to see just send a note to rpumc@rpumchurch.org

Thank you. Jim Chilcutt

Bible Study


Every Monday beginning June 7th - July 12th
at 7:00 pm via Zoom

Join us as we study "Gracism"
by Dr. David Anderson

Dr. Anderson states, "Gracism, unlike racism, doesn't focus on race for negative purposes such as discrimination. Gracism focuses on race for the purpose of positive ministry and service. When the grace of God can be communicated through the beauty of race, then you have gracism. My prayer is that this book will move God's people closer to achieving such a worthy vision." (quote pg. 11 of Gracism) David Anderson is the founder and senior pastor of Bridgeway Community Church, as well as the founder and President of the BridgeLeader Network (BLN), one of the world's leading authorities on the divides of race, wealth, culture, and faith. Dr. Anderson has worked throughout the world, inspiring and healing communities in Asia, Europe, the Middle East, Africa, and North America

GIVE THE OFFICE A CALL FOR THE ZOOM LINK AND
LESSON PLAN

302-654-0961

 Richardson Park UMC
11 N. Maryland Ave.
Wilmington, DE 19804
rpumc@rpumchurch.org



July Birthdays



Joseph Davis July 1
 Diane Maloney July 2
 Tom Pasmore July 2
 Joseph Tucker July 5
 Robert Collins July 6
 Eric Granby July 7
 Gail Eney July 8
 David McFarland July 10
 Joey Beane July 11
 Mark Panaccione July 13
 Jennifer Patterson July 15
 Christopher Swarter July 16
 James Chilcutt July 17
 William Martin July 17
 Nancy Perugini July 18



Bruce Cooke July 19
 Aidan Chilcutt July 21
 Nancy Jaegers July 21
 Dixie Dillion July 21
 Lisa Williams July 21
 Harold Follett July 25
 Daniel Gallagher July 26
 Julia Lynch July 26
 Wyatt Rash July 27
 Michelle Anderson July 27
 RuthAnn Woodward July 28
 Mabel Dunfee July 30
 Nicole Cummings July 30
 Glenda Donnelly

Note: If your name is not listed on our birthday list, please call the church office.



SUNDAY	MONDAY	TUESDAY	WEDNESDAY	THURSDAY	FRIDAY	SATURDAY
The Shoppe at RPUMC, is OPEN by APPOINTMENT ONLY on Thursday afternoons. Contact Sandy (593-3395) to schedule your visit.				1 11:30 AM Free Lunch The Shoppe at RPUMC Open for Afternoon Appointments Only	2	3
4 INDEPENDENCE DAY 10:30 AM Worship & Children's Church 4:30 PM Contemporary Worship - FH	5 OFFICE CLOSED 7:00 PM - Bible Study - Zoom	6	7 7:00 PM - Grief Share - Zoom	8 11:30 AM Free Lunch The Shoppe at RPUMC Open for Afternoon Appointments Only	9	10
11 10:30 AM Worship & Children's Church 11:30 AM Missions Team Mtg. - Ext. 11:30 AM SPRC Mtg. - Lounge 4:30 PM Contemporary Worship - FH	12 7:00 PM - Bible Study - Zoom	13	14	15 11:30 AM Free Lunch The Shoppe at RPUMC Open for Afternoon Appointments Only 7:00 PM - Book Club - Lounge	16	17
18 10:30 AM Worship & Children's Church 11:30 AM Trustee Mtg. - Lounge 4:30 PM Contemporary Worship - FH	19	20	21  NEWSLETTER MESSENGER ARTICLES DUE	22 11:30 AM Free Lunch The Shoppe at RPUMC Open for Afternoon Appointments Only	23 2-day Workshop There's a Battle in Every Pew Register at www.pen-del.org	24 2-day Workshop There's a Battle in Every Pew Register at www.pen-del.org
25 10:30 AM Worship & Children's Church 11:30 Council Mtg. - Lounge 4:30 PM Contemporary Worship - FH	26	27	28	29 11:30 AM Free Lunch The Shoppe at RPUMC Open for Afternoon Appointments Only	30	31

The deadline for your July Messenger is: Friday, July 23rd. Please remember to submit all announcements for the Sunday Bulletin no later than Wednesday. Please submit your articles to the office or via email: rpumc@rpumchurch.org. Thank you. ~Jen



RICHARDSON PARK UNITED METHODIST CHURCH

11 NORTH MARYLAND AVENUE
WILMINGTON, DE 19804-1305
Office: (302) 654-0961
E-Mail: rpumc@rpumchurch.org
Website: www.rpumchurch.org

Rev. Carolyn Williams, Pastor
Cell Phone (302) 545-3528
E-Mail: pastor@rpumchurch.org
Office Hours: 9 a.m.-3 p.m. M-F
Administrative Assistant: Jennifer Boyce



In-Person and Live Streaming Sunday Worship Services at the following sites:

rpumchurch.org/html/streaming_service.html and/or
Facebook at: facebook.com/rpumchurch

Worship and Children's Church.....10:30 A.M.
Contemporary Worship.....4:30 P.M.



Please have articles and information for the August Messenger to the church office by Friday, July 23rd. Remember to submit all announcements for the Sunday Bulletin no later than Wednesday. Email to: rpumc@rpumchurch.org

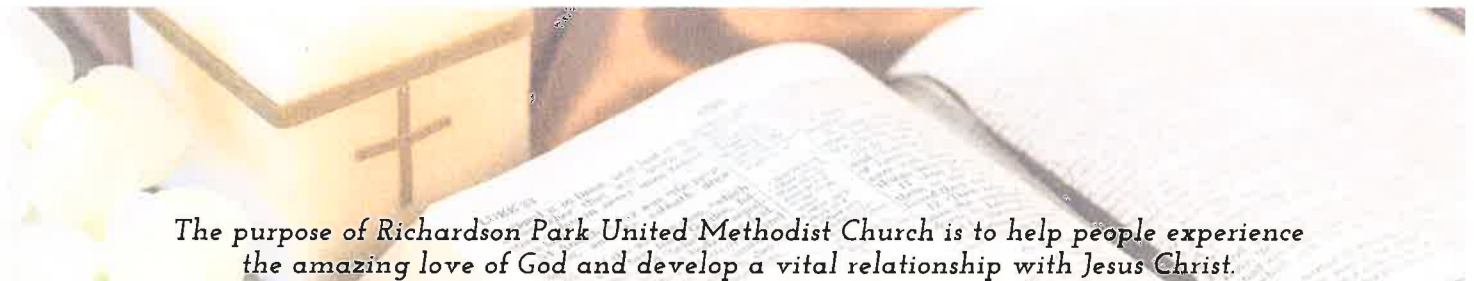
Thank you! ~Jen



ALTAR FLOWER ORDERS!

Please remember that if you would like to dedicate altar flowers "In Honor of" or "In Loving Memory of" a loved one, please submit your order and donation to the church office at least one week before.

Thank you.



The purpose of Richardson Park United Methodist Church is to help people experience the amazing love of God and develop a vital relationship with Jesus Christ.