

the Messenger

Richardson Park United Methodist Church
11 North Maryland Avenue
Wilmington, DE 19804-1305

APRIL 2008

Phone: 302-654-0961
Fax: 302-655-7446
E-Mail: rpumc@rpumchurch.org

Pastor's Ponderings

For everything there is a season...
Ecclesiastes 3:1



On Sunday, March 9, I shared the news that RPUMC will soon enter a new season in its life. Patti and I will be entering a new season in our lives as well. Effective July 1, I have been appointed by the Bishop to begin serving as Pastor of Christ United Methodist Church in Salisbury, MD.

It is hard to believe that eight years ago we first came to Wilmington and received the warm and gracious welcome that is among the hallmarks of this congregation. Patti and I have both been extraordinarily blessed to be here among you, and it has been an honor and a privilege to serve as your pastor. Wherever we go you will remain in our hearts and we always will treasure our years here.

In the United Methodist Church, pastors are appointed by the Bishop, in consultation with the District Superintendents, and with input from pastors and congregations. Our Wilmington District Superintendent, Rev. Dr. Bill Fitzhugh, has already met with members of the Staff-Parish Relations Committee chaired by Sherlynn Aurelio. Very soon an announcement will be made concerning the Pastor who will arrive here July 1. It will be an exciting time for you and your new pastor, and I know that they will receive that warm and genuine welcome that makes this congregation so special.

Times of transition can make us a little anxious. We step onto a new road, not knowing exactly what lies ahead. But we do know that God is with us. At times like these, I often think of one of my favorite "songs." It is a part of Tolkien's "Lord of the Rings" masterpiece. The song comes forth from the lips of the hobbit, Bilbo Baggins, as he steps onto the road for a new adventure:

*"The road goes ever on and on,
down from the door where it began. Now far ahead
the road has gone, and I must follow if I can.
Pursuing it with eager feet, until it joins some larger
way, where many paths and errands meet, and
whither then, I cannot say."*

Grace & Peace,
Bill

Vacation Bible School

**Sunday, June 22 -
Thursday, June 26**



The surf is up for
this summer's
event!



SO HOLD THESE DATES!!

(For information or to give us a hand, call:
RPUMC @ 654-0961.)

Hope to see you at the Beach Party!





APRIL BIRTHDAYS

Dawn Logullo Davis	4/1
Tessa Logullo	4/1
Paul Weaver	4/2
Ruth Rubican	4/4
Ruth Gibney	4/5
Denise Grubb	4/6
Robert Boyd	4/8
Edward Rash	4/9
Kelly Gibbons	4/11
Joan Stadelman	4/11
Annmarie Haynes	4/12
Christopher Sutor	4/16
Rosalie Cascone	4/18
Amber Saienni	4/18
Richard Sutor	4/18
Julie Gibbons	4/19
Kirlynn Phillippe	4/20
Robert Boyd, Jr.	4/21
Katherine Burge	4/22
Robert Collins, Jr.	4/22
Kathy Russell	4/23
Robert Evely, III	4/24
Alicia Silva	4/25
Christine Martnick	4/26
Shirley Delpizzo	4/27
Daniel Swain	4/29

NOTE: If your name is not listed on our birthday calendar, please call the church office at 654-0961. Thank you.

UNITED METHODIST WOMEN

In April, Rebekah Circle will take care of the flowers in the church.

Circle Meetings

Rebekah Circle	Mon., April 7, 7:00 p.m. Church Lounge
Ruth Circle	Wed., April 2, 10:00 a.m. Fouk Manor North Library
Unit Meeting	Mon., April 28, 10:30 a.m. Church Lounge

Health Kits for Migrant Farm Workers

Each year, our church participates in this much needed project of Church Women United. It is not too soon to begin purchasing items for health kits for the Delmarva Rural Ministries – they need all the kits we can collect.

Each health kit should contain:

1 toothbrush	1 new washcloth
1 4 oz. tube of toothpaste	1 new bath towel
1 sturdy comb	1 4 oz. bar of soap
1 deodorant	1 shampoo

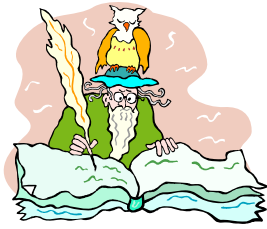
Wrap the above items in the bath towel and tie with ribbon or a pair of shoelaces.

Please bring your kits to the church office or give to Mary Alice Bair by Sunday, April 6.



MISSION TREE

On Sundays in April, we are hanging “**Signs**” of **Spring** on our Mission Tree. Hang a “Sign” of Spring on the tree in honor or memory of someone special to you. Minimum donation is \$1.00. Our tree is located in the Extension.



Below is our fourth essay, written by Yvonne Mitten. Thank you for sharing your special memories with us.

CHRISTMAS ESSAYS

My fondest memory of Christmas at RPUMC is, oddly enough, the year we didn't attend holiday services. Being new to the area, we quickly learned that we were one of a few families with no "connection" to our neighborhood. Most of our neighbors spent their childhoods here and now live just a few blocks from their parents or siblings. Our families are an hour away – in opposite directions.

We had attended church on occasion and the birth of Kathryn four months earlier made us even more eager to find a church home. The congregation was certainly welcoming, but we were still the outsiders; young and unfamiliar. I don't recall what led us to miss Christmas Eve Services – perhaps a tired baby or tired parents caught up in the hustle of providing a holiday for our new daughter. Whatever the excuse, we stayed home.

Christmas morning was pleasant enough. We had each other and our new child. Yet something was missing. Until, that is, the knock on our front door. Who in the world would be knocking on Christmas day? (Besides, nobody uses our front door!) We glanced at each other with a curious look before heading to see who had come to call.

There, on our doorstep, stood Pat and Jay Cummings. "Nice people from church who happen to live just a few houses away." When we opened the door, they handed us a poinsettia, explaining it was from the altar at church and that they had hoped to see us at the service the night before. We were astounded! If memory serves, we didn't even invite them in! But that Christmas changed our lives.

Shortly thereafter, we joined RPUMC. The following year, we were thrilled to attend Christmas Eve services along with Kathryn and nine-day-old Melanie. We have not missed a holiday service since and have truly come to value all of our RPUMC family. We are blessed to call RPUMC "our" church. Every year, as I enter the sanctuary on Christmas Eve, I recall the event that led us to this place. Thank you, Pat and Jay, for leading us home.



WESLEY TOWER BANKS

March 2008

\$92.73

Thanks to everyone for remembering to bring your filled banks to church the first Sunday of each month. Our total to date for 2008 is \$371.48. Remember to pick up an empty bank as you leave the altar area on the first Sunday of each month. **AGAIN, THANKS FOR SAVING YOUR CHANGE .**



ZINGO TAPES

Thank you to all our church family and community friends for saving your Zingo tapes and giving them to the church so that we can participate in the register receipt rebate program. Many thanks to Zingo's for offering this wonderful program. And last, but not least, many thanks to Lillian Simmons and Janet Dickerson for collecting, sorting and tallying the receipts and submitting them to Zingo's on our behalf. Don't forget to bring your tapes to worship service on Sundays. Just place them in the offering plates or in the wicker basket in the vestibule. Your support is appreciated.

MISSION COMMITTEE UPDATE

Thank you to everyone who helped make our Soup and Pie Sale a great success. Our profit was \$1,118.00. Following are the local missions which we support:

Emmanuel Dining Room, Youth for Christ, Neighborhood House, Sojourners Place, Community Action Program (CAP), Kids Café, RESTART Program

Betty Swain and Ruth Berry

FOOD FOR CAP

CAP is in need of the following items for their food pantry:

Oatmeal, Canned Soups, Instant Mashed Potatoes, Canned Tuna, Spam, Peanut Butter, Jelly

Don't forget to bring food for CAP the first Sunday of each month.



A BIG THANK YOU FROM THE YOUTH GROUP



SAVE THIS DATE!

CAP's annual Strawberry Festival will be held on Saturday, June 7, 2008 from 9:00 am to 3:00 pm. The festival will be hosted this year by Peniel United Methodist Church, in downtown Newport. Fresh berries, flea market, lunch, kids' activities, and more. Details to follow in the May edition of the Messenger. See you at the Strawberry Festival!

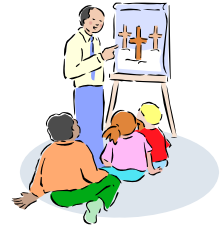
THANK YOU to everyone who has helped financially support our youth group mission trip to Maine. Your contributions are going to help make other people's lives a little easier and give us an amazing experience, all at the same time.

Also, a **HUGE** thank you to Tod and Yvonne Mitten and Rob and Michelle Anderson for their organization of our Pancake Breakfast. A great time was had by everyone who attended.

Check out our flyer in this newsletter for our **BEEF & Birch BEER** fundraiser! We hope you will attend and enjoy the good food and the great music by the Ryan Warfel Trio.

KIDS' KORNER

Sunday School



PreK – 5th Grade – Classroom 3

During April, we will study the exciting adventures of Jesus' disciples. We will learn how they were selected and what they did after Jesus' return to heaven. Our weekly classroom focus will be:

April 6	Breakfast by the Sea	John 21:15
April 13	Jesus Returns to Heaven	Matthew 28:16, Acts 1:9
April 20	Jesus Chooses His Disciples	Luke 5:1
April 27	Paul the Letter Writer	Romans 1:1

As usual, Classroom 3 will be quite active learning about the disciples through Bible readings, role-play, class discussions, and experiments! There also will be new songs for us to sing.

Youth Sunday School 6th - 12th Grades

Well, here we are entering that magic season where things start to grow and the weather gets warm again. We all get excited about the coming of warm weather. Our Sunday School group will be learning many things this month.

We will be learning how God is like a "Potter" – as we are all the work of His hands and how He can use us to mold and influence others. We also will be learning that God is like an "Inventor" – as He is the creator of all and He wants to see us be inventors, too and use our creative abilities. Another lesson this month teaches us that God is like a "Mom" – as a mother comforts her child, God comforts us and helps us. We also will learn to comfort our friends through tough times like God does for us. Finally, we will learn that God is like a "Comedian" – as He fills our mouths with laughter and our tongues with songs of joy. We will learn to use our humor in good ways and learn to avoid some bad ways to use it, too.

We will travel through the Bible this month using such verses as: Judges 6:11-16, 2 Samuel 12:1-13, Isaiah 66:13, and Psalm 5:11, just to mention a few.

Spring is a time for growth in the world, and we will use this time to grow in our knowledge of what God wants to teach us. We will try to "soak up His knowledge" as the flowers soak up the spring rains. Happy Spring!!!

Marlene Johnson and Annette Ott

If you have any questions, please speak with our dedicated teaching staff!

PreK thru Grade 5 Marlene Johnson, Donna Chambers and Michelle Anderson
Grades 6 thru 12 Kristi Doughty, Rob Anderson and Annette Ott

100TH ANNIVERSARY CELEBRATIONS

Terri Weaver, Chair

Our 100th anniversary concert plans are coming together. The handbells' and chancel choir's extra practices are helping us to finalize the music for the concert titled "**100 Years of Priceless Gifts.**" **Shaw Strings**, a string ensemble, also will be featured, with combined music from all groups. Save the date on your calendar for Sunday, April 20 at 3:00 PM and plan to attend the concert to celebrate 100 years of ministry. Refreshments will be served during a 30-minute intermission. A freewill offering will be taken at the concert.

Your help wanted:

- Donations of finger food items for the concert: Fruit, cheese, crackers, dessert items, including sugar-free, are some suggested ideas and are greatly appreciated!
- Post the enclosed flyer at stores with community bulletin boards, lunchrooms at work, libraries, and other churches.
- Volunteers to set up for the concert. (Set up after church on April 20 due to a wedding scheduled for April 19.)

Thank you for your continued support for the 100th anniversary celebrations. WEAR YOUR RPUMC SHIRTS TO THE CONCERT! Scheduled events planned are:

Sunday, April 20 3 PM - Concert including RPUMC's Handbells and Chancel Choir and Shaw Strings.

Saturday, May 3 - 7 PM - Youth Coffee House – Local church youth groups will come together to share their talents. Drama teams, praise bands, soloists, comedians, and any other talents are welcome.

Saturday, June 21 - Community Open House – Exhibits featuring Vacation Bible School and other events will be on display. We'll be giving tours of all areas of the church and welcome packets will be available.

MUSIC NOTES

Terri Weaver, Director



The BMG group was very creative in making a cart from recycled materials to move the handbell equipment. It saves lots of time and makes set-up time easier. Kudos to all. Thank You!

HANDBELL AND CHANCEL CHOIR PRACTICES FOR APRIL 20 CONCERT

Thursday, April 3	Handbells	6:30 PM	
	Chancel Choir	7:30 PM	
Thursday, April 10	Handbells	6:00 PM	
	Chancel Choir	7:30 PM	
Sunday, April 13	Handbells and Chancel Choir		3:00 PM
Thursday, April 17	Handbells	6:00 PM	
	Chancel Choir	7:00 PM	
Sunday, April 20	Handbells	1:45 PM	
	Chancel Choir	2:00 PM	

Faithfully, Terri Weaver

Church Council did not meet in March but did gather with Trustees on Sunday, February 24 to listen to a proposal to change our organ tuner. Our current tuner is not working out, and it was decided to gather bids for a possible change. The proposal was approved by majority vote of Church Council and Trustee members. This change will bring about more harmony between the organist and maintenance staff (Jay) and lay the groundwork for reducing the countless hours Jay spends keeping the organ tuned and functioning properly.

With the announcement on March 9 that Pastor Bill will be moving to another church, it will be difficult over the next few months to keep focused on our mission. We must, however, keep the "ball in play" and continue to work on those programs Bill has helped develop. Controlling our costs and keeping up our giving, plus getting full measure on all the dollars we spend, are paramount. There have been several ideas put forth on how we can lower costs and save money. If you have an idea, let someone know about it! As the process of interviewing prospective replacements for Bill continues, keep the SPRC and Chair Sherlynn Aurelio in your prayers. When the announcement is made, I know we will embrace that person with the same love and dedication that greeted Bill and Patti eight years ago.

The next Church Council meeting will be Sunday, April 27 at 11:30 AM.

RPUMC**1907 - 2007****Rooted and Growing in Christ**

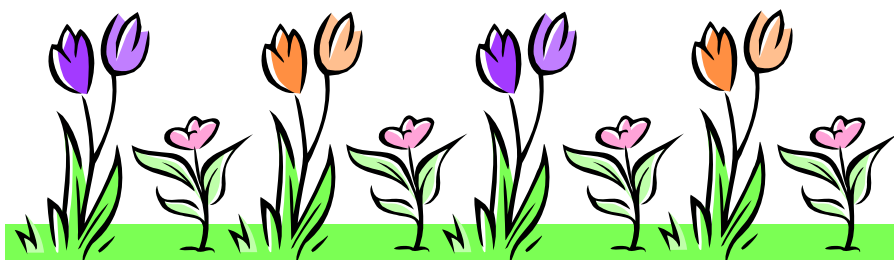
RICHARDSON PARK
UNITED METHODIST CHURCH
11 NORTH MARYLAND AVENUE
WILMINGTON DE 19804-1305

NON-PROFIT ORGANIZATION
U.S. POSTAGE PAID
Wilmington, DE
Permit No. 162

"THE MESSENGER" APRIL 2008

Return Postage Guaranteed
Address Service Requested

Office Phone: (302) 654-0961 Office Hours: 9 AM-1 PM M-F FAX #: 655-7446
Parsonage Phone: (302) 652-6168 E-Mail: rpumc@rpumchurch.org
Bill Green, Pastor



LAY READERS

April 6	Sath Amara
April 13	Christopher Doughty
April 20	Beth Warfel
April 27	Mary Ann Atkinson

ALTAR FLOWERS

April 6	Lynn Lafferty
April 13	Clyde and Carolyn Nafzinger
April 20	Jerry and Joyce Toy
April 27	Jim and Cheryl Chilcutt

FLOWERS

For the month of April, Rebekah Circle is responsible for the flowers.

* * * * *

**PLEASE REMEMBER TO BRING FOOD FOR CAP
THE FIRST SUNDAY OF EACH MONTH.**

* * * * *

Please submit your articles for the May Messenger to the Church Office by Thursday, April 10. Thank you.

The purpose of Richardson Park United Methodist Church is to help people experience the amazing love of God and develop a vital relationship with Jesus Christ.